

Bry-Air's MiniPAC[®] dehumidifier is the ideal dehumidification solution for facilities in need of reliable humidity control or mould and mildew protection. The MiniPAC[®] can be installed as a stand-alone unit or attached to any central air conditioning system to enhance the system's dehumidification capability. It is a small, yet powerful unit that combats the effects of moisture in up to 10,000 sq. ft.* and is ideal for a wide variety of applications.

Volume varies based on conditions



MiniPAC[®] Dehumidifier Advantages

- A compact dehumidification unit that fits easily into small places
- No replacement filters to inventory - units include washable filters
- Lower energy consumption of over-cooling and reheat
- Low operating cost
- Quiet operation in industrial environments. Commercial applications may require sound attenuation option.
- Guaranteed performance of Bry-Air desiccant rotors
- Convert existing heating and cooling systems to maintain humidity control throughout the entire building or just one room
- Available in seven CFM sizes, from 100 CFM to 1800 CFM
- Optional pre and post cooling coils
- Optional stainless steel construction
- 24/7 tech support





Filters with easy to remove access panels - No tools required

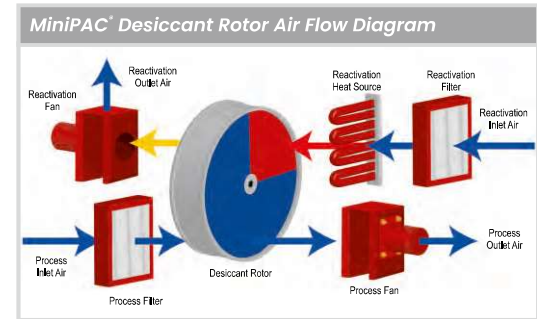
Convenient front-mounted performance lights

No drain lines or water buckets as humidity is removed via the air, similar to a clothes dryer

Trouble-free desiccant rotor

Round duct collars with heavy duty, easily hand-adjusted volume damper for accurate performance

Easy access test ports for performance verification



Feature Highlights

HIGH EFFICIENCY & RELIABILITY

- 100 CFM to 1,800 CFM (169 CMH to 3058 CMH)
- ETL listed & totally self-contained
- Insulated process and reactivation air flow sectors
- Rotor with stainless steel flange
- Optional packages including pre and post cooling

CONTROLS & SAFETIES

- Differential air pressure switch for proving react air flow
- High temp safety thermostat
- Reactivation cool down
- Electrical interlock of fan motors, heaters and rotor drive
- Optional humidistat for humidity control (room or duct mount)
- Optional condensation control package

EASY TO OPERATE

- Suitable for continuous operation
- Auto / manual selector switch
- Power on, heater on, and fault status indication
- Independent blower for each air stream
- Volume control dampers
- Optional heater control for high accuracy

EASY TO INSTALL

- Several mounting and installation options
- Small physical size - Easy to maintain
- Quick and easy to service

EASY TO MAINTAIN

- Quick and easy to service
- Rotor is water washable per the IOM
- Very few moving parts to fail

Bry-Air's MiniPAC® is the ideal desiccant dehumidification solution for projects in need of reliable humidity control, additional moisture control or mould and mildew prevention.

Model	Process CFM	Process ESP (”wc)	React CFM	React ESP (”wc)	Voltage	RLA AMPS	MCA AMPS	MCCP	Weight (Unit Only)
MP-100	100	0.70”	34	0.45”	208/1/60	19.0	23.8	30	139
					240/1/60	16.5	20.6	25	
MP-175	175	0.60”	58	0.40”	208/1/60	22.8	28.5	30	158
					240/1/60	19.8	24.7	30	
MP-350	350	0.90”	117	0.70”	208/3/60	29.0	36.2	40	222
					240/3/60	25.1	31.4	35	
					460/3/60	13.0	17.0	20	
					208/3/60	48.0	60.0	70	
MP-600	600	0.75”	200	0.45”	240/3/60	41.6	52.0	60	306
					460/3/60	22.3	29.0	35	
					208/3/60	65.1	81.3	90	
MP-900	900	0.75”	300	0.45”	240/3/60	58.4	73.0	80	392
					460/3/60	28.6	35.8	40	
					208/3/60	84.8	106.0	110	
MP-1200	1200	0.75”	400	0.45”	240/3/60	76.2	95.3	80	411
					460/3/60	36.5	45.6	50	
					208/3/30	50	62.5	70	
MP-1800	1800	0.75”	600	0.45	460/3/30	50	62.5	70	525

Minipac® Performance Chart Instructions:

To determine the performance of a MiniPAC® utilize the chart below as follows:

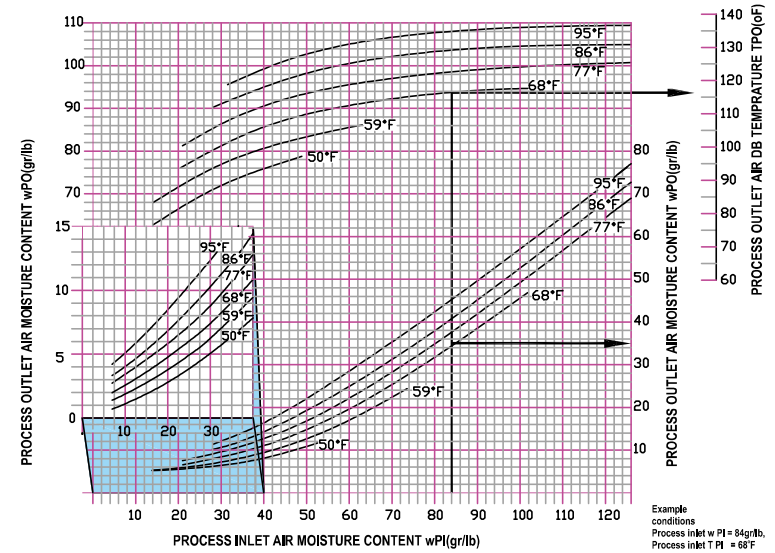
Determine the inlet air moisture content in grains/pound (example below shows 84 gr/lb) and find that point along the horizontal axis on the chart (see heavy black line for example).

Follow that point vertically to intersect the approximate inlet temperature curve (example below is at 68°F) and follow that intersection horizontally to the right to find the MiniPAC® process outlet moisture content (Example arrow indicates 35 gr/lb)

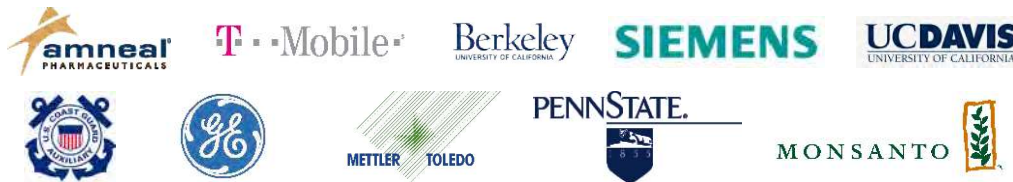
Continue to follow main vertical point again from bottom horizontal axis to the top section temperature curves until intersection with the approximate inlet temperature condition. Now follow that intersection horizontally to the right (example by heavy black arrow near top of chart) until intersection with the right Process Outlet Air Temperature Chart (example indicates 116°F)

Using this chart provides accurate prediction of performance for any size MiniPAC® based on inlet moisture condition and temperature. In the example indicated below an inlet of 68°F @ 84 gr/lb yields and outlet of 116°F @ 35 gr/lb (without optional pre or post cooling coil module).

PERFORMANCE CHART – MiniPAC® Series



Proud MiniPAC® Owners



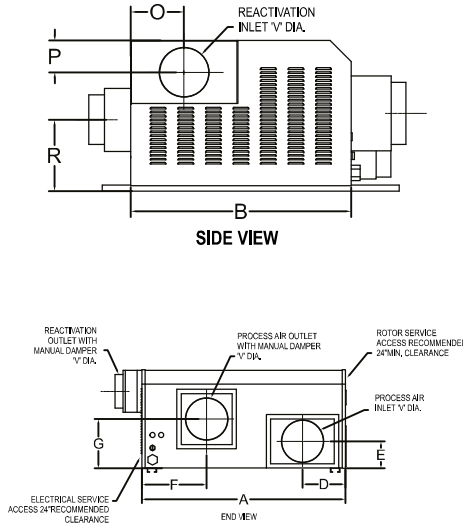
“ We have Bry-Air MiniPAC® units running in multiple areas of our facility, from labs to protent compounding, and all of them are fantastic. They are extremely effective and we are always pleased with how quickly the MiniPAC® can bring a room in.to specification. Most important to us is the low maintenance of these units. Other than regular filter changes they have running attended for years in perfect working order. Because of this we are looking to Bry-Air as a solution for our future plans. ”

Elijah Gosier Manager, Facility Operations at Xcellience

Application

- Colleges & Universities
- Control Rooms
- Critical Materials Store Rooms
- Fine Homes
- Government Facilities
- Libraries & Archival Storage
- Museums And Conservatories
- R&D, QC And Bio Med Labs
- Restaurants
- Retrofit Existing Systems For Mold Control

Minipac® Dimensional & Performance Data



Dimensional Data (Inches)							
Dim	MP-100	MP-170	MP-350	MP-600	MP-900	MP-1200	MP-1800
A	26.625	29	24.875	41.125	47.3333	47.3333	47.375
B	18.5	21.25	24.8125	28.75	35	34.625	39.25
C	15.3125	17.5	19.4375	21.875	23	24.75	28.375
D	5.75	6.5	7.6875	8.6875	9.875	9.875	11.75
E	4.125	4.5	5.3125	5.6875	5.687	5.6875	6.375
F	9	9.3125	11.8125	14.375	14.75	14.375	15.5
G	8.875	10.4375	10.8125	11.25	12.125	13.5	16.5
O	4.3125	4.3125	5.5625	8.375	8.375	8.375	8.375
P	3.375	3.375	3.375	4.9375	4.9375	4.9375	4.875
Q	9.0625	9.3125	11.8125	14.375	14.75	14.75	14.75
R	6.3125	6.6875	8.525	10.4375	10.4375	10.4375	10.25
Connection DIA V	4	4	6	8	8	8	12



Leaders in Dehumidification... Worldwide



BRY-AIR (ASIA) PVT. LTD.
Corporate Office:
 21C, Sector-18, Gurgaon 122015
 Phone: +91-124-4091111
 Fax: +91-124-4091100
 E-mail: bryairmarketing@pahwa.com
Registered Office:
 20, Rajpur Road, Delhi 110054
 Phone: +91-11-23906866
 Fax: +91-11-23906600
 E-mail: enquiry@pahwa.com
 Web: www.bryair.com
 CIN: U74210DL1981PTC012456

BRY-AIR (MALAYSIA)
H.O. & Factory
 Phone: +60-3-89256622
 Fax: +60-3-89259957
 E-mail: bryair@bryair.com.my
Sales Office
 Phone: +60-3-77259919
 Fax: +60-3-77259957
 E-mail: bam@bryair.com.my
 Website: www.bryair.com.my

BRY-AIR (USA)
 Phone: +1-740-965-2974
 E-mail: bryair1@bry-air.com
 Website: www.bry-air.com

BRY-AIR (BRAZIL)
 Phone: +55-41-36982222
 E-mail: contato@bryair.com.br
 Website: www.bryair.com.br

BRY-AIR (PHILIPPINES)
 Phone: +63-2-89078435/6/7
 E-mail: mail@bryair.com.ph
 Website: www.bryair.com/philippines

BRY-AIR (VIETNAM)
 Phone: +84-28-39956498
 E-mail: vietmarketing@bryair.com.my
 Website: www.bryair.com.my/vietnam

BRY-AIR (SWITZERLAND)
 Phone: +41-91-6830971
 E-mail: info@pro-kon.ch
 Website: www.bryairprokon.com

BRY-AIR (CHINA)
 Phone: +86-21-34126537
 E-mail: info@bryair.com.cn
 Website: www.bryair.com.cn

BRY-AIR (UAE)
 Phone: +971-6-5574622
 E-mail: support@bryair.ae
 Website: www.bryair.com/uae

BRY-AIR (INDONESIA)
 Phone: +62-21-79199023
 E-mail: indoman@bryair.com.my
 Website: www.bryair.com/my/indonesia

BRY-AIR (NIGERIA)
 Phone: +234-8097276772
 E-mail: bryairnigeria@pahwa.com
 Website: www.bryair.com/nigeria

BRY-AIR (BANGLADESH)
 Phone: +880-1819409100
 E-mail: bryairbangladeshi@pahwa.com
 Website: www.bryair.com/bangladesh